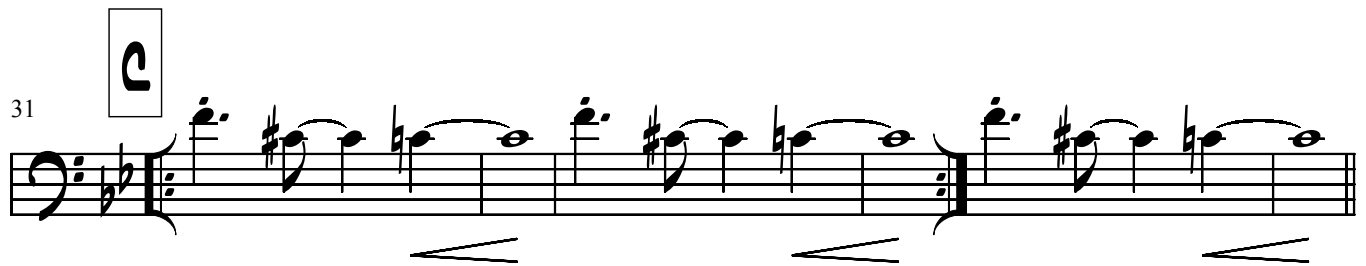
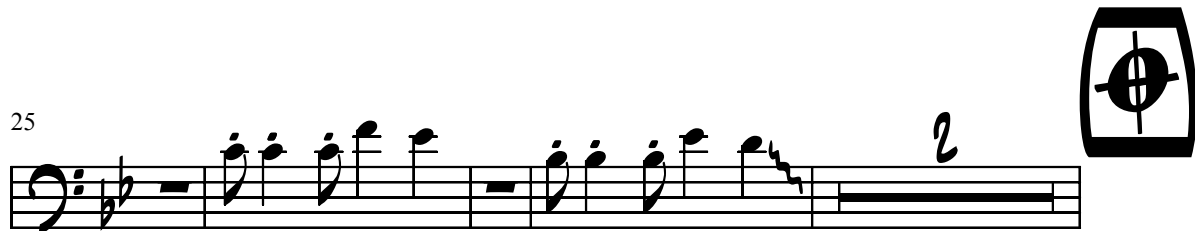
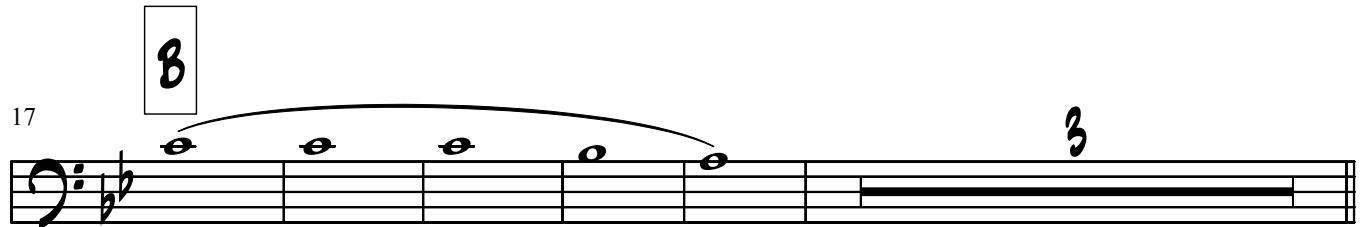


TROMBONE 2

EL CANTANTE

R. BLADES

CONTEO=2-4



TO  2X AND 



INTERLUDE 1

Musical notation for Interlude 1, starting at measure 40. It features a bass clef and a key signature of two flats. The melody includes a triplet of eighth notes, a measure with a '2' above it, and another triplet of eighth notes. The piece concludes with a double bar line.

D CORO 1 OPEN

Musical notation for Coro 1 Open, starting at measure 44. It consists of a single measure with a double bar line and a repeat sign at the end. An '8' is written above the staff.

E MAMBO

Musical notation for Mambo, starting at measure 52. It features a bass clef and a key signature of two flats. The melody includes a series of eighth notes with a slur, followed by a measure with a '2' above it. The piece concludes with a double bar line.

BOSSANOVA STYLE

Musical notation for Bossanova Style, starting at measure 58. It features a bass clef and a key signature of two flats. The melody consists of eighth notes with a slur, followed by a measure with a '7' below it. The piece concludes with a double bar line.

Musical notation for Bossanova Style, starting at measure 62. It features a bass clef and a key signature of two flats. The melody consists of eighth notes with a slur, followed by a measure with a '7' below it. The piece concludes with a double bar line.

Musical notation for Bossanova Style, starting at measure 68. It features a bass clef and a key signature of two flats. The melody includes a measure with a '2' above it, followed by a triplet of eighth notes. The piece concludes with a double bar line.

F CORO 2 OPEN

Musical notation for Coro 2 Open, starting at measure 74. It features a bass clef and a key signature of two flats. The melody includes a measure with a '1x ONLY' label and a dashed line, followed by a measure with a '3' above it. The piece concludes with a double bar line.

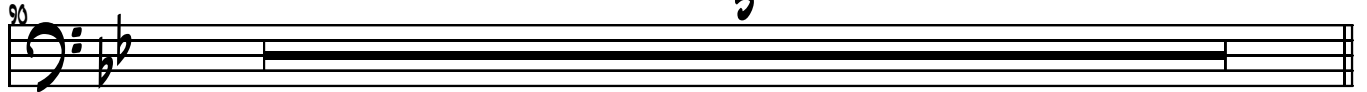
1x TACET -----

El Cantante Tbone 2

3



(ULTIMO CORO)



CODA

