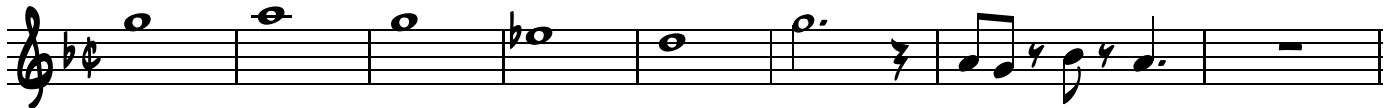


BARITONE SAX

LA CARTERA

ARSENIO RODRIGUEZ

INTRO



CHORUS



VERSE

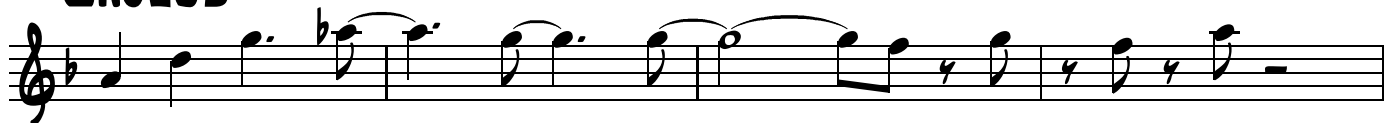
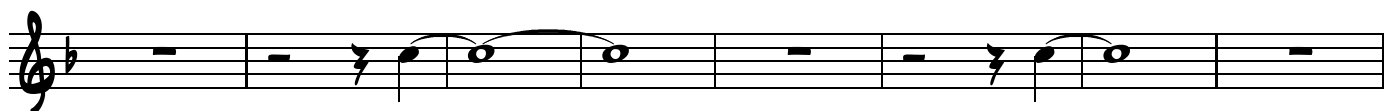


CHORUS



VERSE 2



CHORUS**CHORUS****VERSE 3****CHORUS****CHORUS**

INTERLUDE

Musical notation for the Interlude section, consisting of two staves. The first staff has a measure with a whole rest, followed by two measures of eighth notes, and a final measure with a whole note and a '2' above it. The second staff contains a continuous eighth-note melody.

MONTUNO 1 (AD LIB)

Musical notation for Montuno 1 (Ad Lib), a single staff with a long horizontal line and a '4' above it, indicating a four-measure rest.

MAMBO (ON CUE)

Musical notation for Mambo (On Cue), consisting of two staves. The first staff starts with an 8-measure rest, followed by eighth-note patterns. The second staff continues the eighth-note melody.

(BONES)

Musical notation for the Bones part, a single staff with eighth-note patterns.

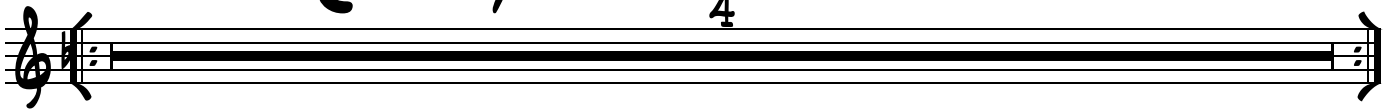
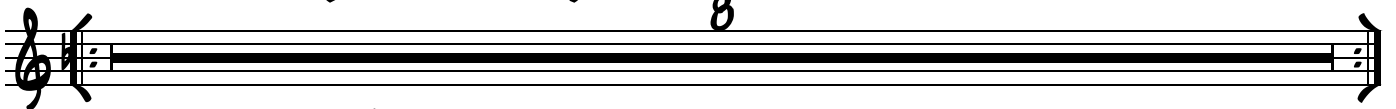
(TRUMPETS)

Musical notation for the Trumpets part, a single staff with eighth-note patterns.

Musical notation for the Saxes part, a single staff with eighth-note patterns.

(SAXES)

Musical notation for the Saxes part, a single staff with eighth-note patterns.

(BONES)**(TRUMPETS)****TRES SOLO (AO LIB)****Moña (On Cue)****FLUTE SOLO (AO LIB)****MONTUNO 2 (AO LIB)****CODA**