

BASS

LADY IN RED

SALSA - JUNIOR GONZALEZ

INTRO

♩ = 184

4

B^b B^b/D E^b_{MA9}

$F(ADD 2)$ B^b B^b/D E^b_{MA9} $F(ADD 2)$

VERSE 1

B^b B^b/D F D^7

G_M G_M F E^b E^b E^b/F

VERSE 2

B^b B^b/D F D^7

G_M G_M F E^b E^b

CHORUS BRIDGE

G_M

G_M F

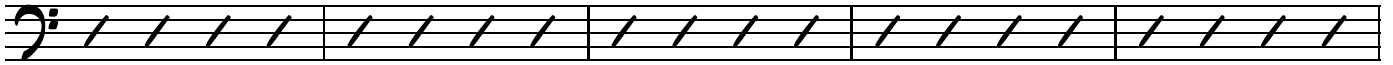
LADY IN RED - BASS

CHORUS

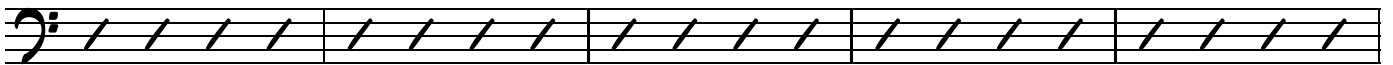
B^b B^b/D E^b F G_M G_M



G_M G_M C_M^7 C_M^7 F



F B^b B^b B^b7 B^b7



BRIDGE

E^b E^b D^7 D^7 G_M $G_M(MA^7)/F^\sharp$



G_M^7/F C_M^7 C_M^7 F^7 F^7



INTERLUDIO (INTRO)

B^b B^b/D $E^b_{MA^9}$ $F(ADD\ 2)$

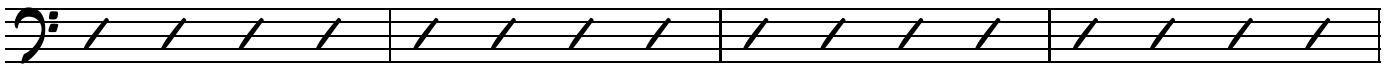


B^b B^b/D $E^b_{MA^9}$ $F(ADD\ 2)$

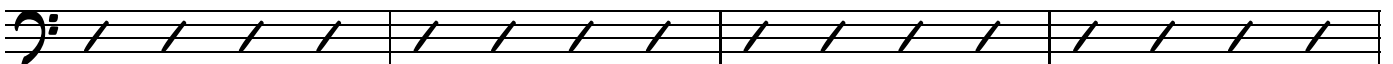


VERSES

B^b B^b/D F D^7



G_M G_M F E^b E^b E^b/F



LADY IN RED - BASS

INTERLUOIO

B^b A^b D^b_{MA7} C_{M7} $F7$ B^b

MONTUNO 1 (AD LIB)

B^b B^b/D F F

MAMBO (ON CUE)

B^b A^b D^b_{MA7} C_{M7} $F7$

MONTUNO 2 (AD LIB)

B^b B^b/D F F

CODA

C_{M7} D_{M7} E^b_{MA7} N.C. $B^b(ADD2)$