

BARITONE SAX.

QUIMBARA

J. CEPEDA

CONTEO=2-4

Musical staff with treble clef, key signature of three sharps (F#, C#, G#), and common time signature (C). The staff contains a whole rest for 4 measures, followed by a repeat sign and another whole rest for 8 measures. Above the staff, a box labeled 'A' is positioned over the first 4 measures, and a box labeled 'Voz' is positioned over the second 8 measures.

B

Musical staff starting at measure 13. It contains a series of eighth notes and quarter notes, with two triplet markings (indicated by a '3' over a bracket) over groups of three notes.

Musical staff starting at measure 17. It continues the melodic line with eighth notes and quarter notes, including two more triplet markings.

C

Musical staff starting at measure 21. It features a whole rest for 12 measures, followed by a first ending (marked '1.') with a whole rest for 4 measures, and a second ending (marked '2.') with a whole rest for 4 measures.

D

Musical staff starting at measure 41. It begins with a whole rest for 4 measures, followed by a rhythmic pattern of eighth notes and quarter notes.

Musical staff starting at measure 51. It continues the rhythmic pattern with eighth notes and quarter notes, ending with a final flourish.

59 **E** **CORO 1 OPEN** **1x ONLY**

67 **F** **MAMBO**

81 **G** **CORO 2 OPEN**

85

89 **H** **CORO 3 OPEN**

97 **I** **Moña**

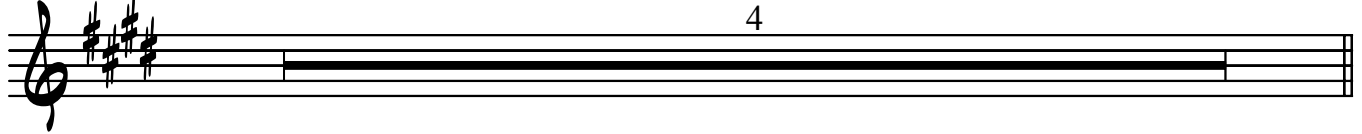
Quimbara Baritone Sax

3



(ULTIMO CORO)

105



BRASS

109



113

